



hydréa | LONDON

Exfoliate

Detox

Natural Eco-Friendly  
Bodycare

Wellbeing

Regenerate

Massage

Pamper

[www.hydréalondon.com](http://www.hydréalondon.com)

**The Natural Sea Sponge Company** has a long and rich history in the sea sponge industry. For many years we have specialised in the trade of natural sea sponges. Today we are proud to continue the old traditions of sponge fishing and processing so maintaining the high standards of the industry. We work closely with registered divers in Tunisia and Greece to ensure the sponge ecosystems are fully protected and continue to flourish and we support the local communities where the sponges are fished. We have complete quality control at our premises in London where the sponges go through a 42 stage production process by hand.

With the growth of the company and to complement the sea sponges, we introduced a fine collection of superior natural bodycare and spa accessories and the Hydréa London brand was born.

We are proud to be at the forefront of ethical sourcing and manufacture. Over the years we have driven the demand for environmentally sound products and helped increase consumers choice and awareness through our Hydréa London brand. We sustainably source only the finest natural and organic raw materials from around the world and make the majority of our products in UK and Europe. We specialise in FSC certified wooden products were the first UK Company to provide a fully comprehensive range of affordable FSC certified brushes and massagers for the professional spa and beauty industry.

With our dedicated team, extensive product knowledge and innovative design capabilities, Hydréa London has become known as the most exciting, ethical and best quality brand available in the market. Hydréa London is now an international brand supplying luxurious bodycare all around the world.

We maintain our long tradition of careful selection, monitoring and quality control and continue to offer real value and quality to our customers. We hope you enjoy looking at our comprehensive range of bodycare products.





### The Benefits of Using Sea Sponges

Sea sponges are the most natural and caring ways to cleanse, massage and gently exfoliate your skin and are superior to any synthetic alternative. When wet they can be compared to the feel of silk yet they can clean like no other washcloth can. Sea Sponges are hypoallergenic and suitable for even the most sensitive of skins.

They are very long lasting as they are more resistant to abrasion and they will not peel like synthetic sponges while being used. Sea Sponges are better for bathing and cleansing because they soak up and hold more water without dripping. Natural sponges naturally inhibit the growth of bacteria and wash out more quickly and easily and will not retain odours.



#### HC - Honeycomb Sea Sponge *Hippospongia Communis*

Honeycomb sea sponges are the finest quality of natural sponge available being silky soft, highly absorbent and creating luxurious lather. This is because they are gathered from the Mediterranean where the cooler sea temperature and greater depths create very strong dense sponges. These sponges can last 2 years + with normal care.

Place of origin Eastern Mediterranean - Made in UK



This silky soft sponge is super absorbent, hypoallergenic and excellent for use as part of your daily face care routine, applying cosmetics or for use on babies delicate skin. Place of origin East Mediterranean - Made in UK



#### BW - Sea Wool Sponge *Hippospongia Lachne*

This luxurious Sea Wool sponge is super soft and perfect for working up a rich lather for bath and shower body cleansing. These sponges can last 6 months to 1 year with normal care.

Place of origin Bahamas - Made in UK

#### BG - Grass Sponge *Spongia Gramminae*

This is an inexpensive option of natural sea sponge sustainably harvested from the Bahamas and still perfect for bathing. These sponges will last up to 6 months with normal care.

Place of origin Bahamas - Made in UK



## The Natural Sea Sponge Company's Environmental, Ethical & Quality Promise

### Environment

Natural sea sponges are a biodegradable renewable natural resource. Scientific studies have confirmed that regular harvesting of the sponges enhances the health and population. In fact many areas where sponges are harvested are marine protected areas for this reason.

We carefully monitor our divers who carry special licences to fish for sponges. All the sponges are inspected by the relevant Ministry of Agriculture and Fisheries to be certified for export.

The divers harvest the sponges individually by cutting the sponge at the base, leaving the 'roots' intact and enabling the sponge to re-grow. Only sponges above 5" are permitted to be harvested leaving the smaller ones to grow. Sponges also have the ability to regenerate from the smallest fragment so when the sponges are disturbed by the divers moving on the sea bed they release cells and multiply. Therefore areas that are fished for

sponges will have a larger sponge population than one that is not.

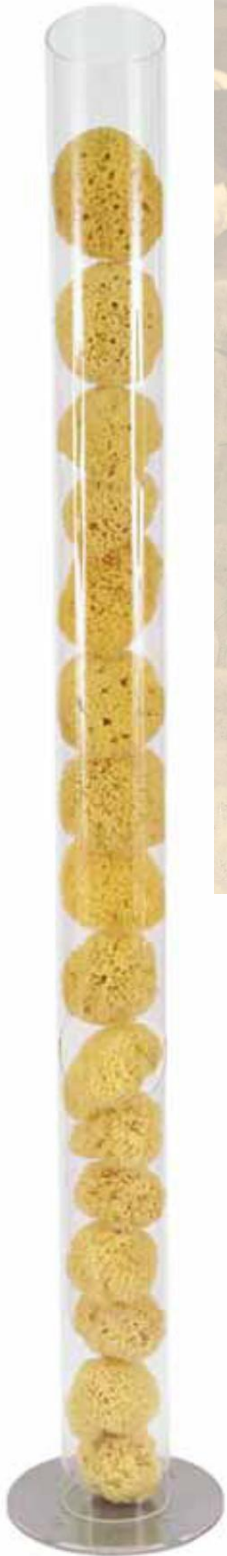
All the materials used in the packaging and processing are recyclable.

### Ethical

We always buy our sponges directly from the local divers at fair prices, therefore supporting the local community in that area and ensuring the old traditions of sponge fishing are not lost.

### Quality

At The Natural Sea Sponge Company we still use the old traditional methods of the sponge industry to process, measure and prepare sponges for sale. We carefully monitor every stage in the production of natural sponges from the sourcing by our divers to the packaging of the final product. Our sponges undergo 42 stages of processing by hand and the final stages are always carried out in our London warehouse. This ensures we have complete quality control from beginning to end.



Packaging Options





## What is loofah?

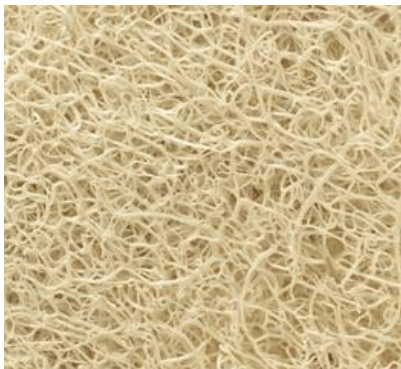
Loofah is a climbing vine related to the cucumber family which bears fruit in the summer. It is a fast growing and versatile plant, the fruit of which is cultivated for food and sponge use. Loofah is one of nature's best exfoliators.



### 100% Superior Egyptian Loofah

Hydréa London uses superior Egyptian Loofah which is organically farmed in Egypt where the nature of the land produces the best quality loofah available on the market.

Egyptian Loofah is highly recommended by professionals for effective skincare due to its thicker, flexible fibres that soften and expand when wet. The looser weave creates plenty of lather and dries quickly which has the added benefit of preventing bacteria from lurking! The natural fibres give skin a soft smooth glow without being too harsh. No wonder it has been cultivated for skincare since ancient times!



Our loofah is 100% organic, sustainable and biodegradable.

## Body Benefits

of using the organic loofah collection

### Deep cleansing:

Unblocks pores and removes impurities for fresher, clearer skin.

### Exfoliating:

Removes dead surface skin allowing moisture and active skin care ingredients to penetrate. Prevents in-growing hairs and prolongs suntans. It can help cellulite.

The result is smoother, polished and more hydrated skin.

### De-toxing:

Help to stimulate the lymphatic system to drain cellular waste and toxins safely away. It can help prevent toxins and layers of the skin helping to reduce the

Regular use can help protect the immune system and improve digestion and general well-being.

### Regenerating:

Stimulates blood circulation and cell renewal resulting in healthier, younger looking skin.

### Massage:

Invigorates tired muscles and relaxes body and mind.



#### LC4.5 - Chinese Loofah with Rope

A classic product used for sloughing off dead skin cells in the bath or shower, leaving you with brighter, fresher skin. With hanging rope for air drying after use. Available sizes: 4.5", 12" and 24".



#### LMT1 – Organic Egyptian Loofah Bah Mitt

Indulge in some bath time pampering with this high quality mitt which effectively smooths away dead skin cells and boosts circulation for healthy glowing skin. Backed in soft Egyptian cotton for a gentle cleansing massage. Use wet with cleansing product if required.



#### LO15 & LOV15 - Organic Egyptian Loofah Body Pads

15cm diameter body pads for exfoliating the body in the bath or shower. With an elasticated strap for a secure grip. Backed with soft Egyptian cotton.



#### LO10 - Organic Egyptian Loofah Facial Pad

A handy pad to deep cleanse pores, boost circulation and exfoliate for a younger looking complexion. Backed with soft Egyptian cotton for a gentle cleansing massage.



#### LMT4 - Organic Egyptian Loofah Pad Glove

A soft cotton cleansing glove with loofah pad for Invigorating exfoliation. With an elasticated cuff for a snug fit and easy action. Preferred by spa professionals for treatments.



#### WSL13 - Organic Egyptian Loofah Brush with Detachable Handle

Exfoliate those hard to reach areas with ease. Use wet with your favourite cleansing product. FSC® certified Beechwood.



## What is Sisal?

Sisal comes from the Agave Cactus which yields a stiff, durable, non-static fibre which is then woven into bodycare mitts or used to fill brushes. It is the perfect natural fibre for exfoliation to improve skin tone and condition. It is a sustainable resource and produced with minimal environmental impact as no chemical fertilizers are used, weeding is done by hand and manufacture is done mechanically. Sisal is also valuable forage for honey bees because of its long flowering period.



### SCBS - Dual Sided Back Strap

One side of the strap is woven from sisal fibre - perfect for buffing away dead skin cells and boosting circulation. The reverse side is backed with soft terry cotton for a deep cleansing massage. With eco-friendly FSC certified wooden handles.



### SBS - Sisal Back Strap

A high quality strap made from woven sisal to exfoliate away dead skin cells and improve skin tone and condition. With eco-friendly FSC certified wooden handles for those hard to reach areas like the back and shoulders.



### SS5 - Sisal Sponge

This beautiful sisal sponge will be a perfect addition to your daily cleansing routine. The woven sisal cover encloses a ball of sisal fibres, providing a natural way to exfoliate your skin effectively while improving circulation and skin tone.



### SMT02 - Sisal Exfoliating Glove

The knitted sisal is a perfect texture for effectively exfoliating the body while improving circulation and skin tone. The mitt is lightweight and flexible, dries quickly and has a handy thumb for extra control.

### SJB - Japanese Spa Body Brush

A beautiful body brush made in the traditional Japanese way. Ideal for wet or dry body brushing to smooth and invigorate the skin and body.



### SJL & SJM - Japanese Spa Back Straps

Fun and flexible back straps made in the traditional Japanese way. Ideal for wet or dry body brushing to exfoliate away dead cells and perk up tired, dull skin. This wrap around style is perfect for all over body exfoliation and those hard to reach areas like the back and shoulders. Especially popular with men.

Large SJL: 65cm, Medium SJM: 45cm



### Bamboo Bodycare, the Benefits

- Naturally Anti-Bacterial & Anti-Fungal
- Odour Resistant
- Hypo-Allergenic
- Super Soft
- Super Absorbent
- Temperature Regulating
- Breathable
- Lightweight
- Strong and Durable
- Super Soft & Luxurious
- Eco-friendly: Organic and Sustainable

### Bamboo Bodycare, Caring for You and the Environment

Bamboo thrives naturally in many regions of the world. It grows organically without the need for chemicals due to its naturally pest resistant qualities. Bamboo is a fast growing grass, which produces more oxygen and absorbs more carbon dioxide than an equivalent stand of trees, making it an excellent sustainable and eco-friendly resource. When harvested, the extensive root system is left intact allowing for rapid self-regeneration while helping to prevent soil erosion. Bamboo is 100% biodegradable.



### BCEP - Bamboo Lavender Eye Pillow

A luxuriously silky soft bamboo fabric eye pillow padded with natural lavender and rice. It acts as a natural compress for relaxing facial muscles while the lavender soothes the mind. The natural lavender scent acts as an inhaler to clear the mind and aid relaxation from within. Tested to BS8433 safety standard - this pillow can be heated in the microwave to encourage circulation and relieve eye strain, headaches and stress or pop it in the freezer to reduce inflammation and refresh tired eyes. Perfect travelling accessory to aid sleep. The removable cover is machine washable.



### BCHDTW - Bamboo Hair Drying Wrap

The fast and easy way to dry your hair naturally. Bamboo works quickly to absorb 3-4 times more moisture than a conventional cotton towel, therefore reducing the need for blow drying. The wrap is designed to easily secure your hair in place allowing you to apply make up or have a facial while your hair dries! Perfect for the spa, the gym, home or when travelling. Machine washable.

### BCHDB - Bamboo Headband

Luxuriously silky soft Bamboo Headband, elasticated for superb grip and comfort. Effectively keeps hair tidy and away from the face, making it ideal for cosmetic applications, facials and exercise activity. Machine washable.



#### BLBS - Bamboo & Loofah Back Strap

Silky soft Bamboo fabric and exfoliating Loofah combine in an easy reach Back Strap for an all over cleansing, massaging and exfoliating experience.



#### BLS - Bamboo & Loofah Sponge

Luxurious Bamboo fabric and exfoliating Loofah combine in a sponge for an all over cleansing, massaging and exfoliating experience.



#### MT14 - Bamboo Mitt

A thick mitt woven from natural bamboo fibre, a perfect texture for gently exfoliating the whole body and boosting circulation for silky soft skin. The naturally antibacterial properties of bamboo ensures clear, healthy and glowing skin. Machine washable, lightweight and durable - a must have natural accessory for a wonderful pampering experience.



#### FBS30 - Bamboo Dual-Sided Washcloth

A sumptuous washcloth with a textured bamboo side for exfoliating and a smooth soft side for gentle washing and removing cleansing products from the facial area. The anti-bacterial nature of bamboo fibre deep cleanses pores and removes impurities. Machine washable. 800gsm.



#### BCEG1 - Carbonized Bamboo Exfoliating Gloves

Made with a new natural technology that releases health giving Anions which helps discharge the body of positive ions we receive from the electronic devices of modern day life. They also release far Infrared waves which help energise the body and metabolism. Naturally antibacterial, odour and mildew resistant with permanent positive properties



Hydréa London's spa range has been developed in conjunction with the professional spa industry using the finest raw natural materials. The result is a superb quality range of products that are stylish, functional, long lasting and easy to use. Our products can be found in the leading spas worldwide.



**MT03 - Professional Cotton & Linen Spa Mitt**

A high quality, versatile mitt made of soft cotton for deep cleansing the pores and with pure linen stripes for exfoliating the skin. Machine washable.

Made in EU



**BS03 - Cotton & Linen Back Strap**

A back strap made of soft cotton for deep cleansing with pure linen stripes for exfoliating. The strap features FSC certified wooden handles secure grip and easy reach. Machine washable. Made in EU



**MT04 - Professional Linen Spa Mitt**

A high quality mitt made of pure knitted French linen for deep cleansing and exfoliating. Perfect for use in the salon or for home spa treatments. Machine washable.

Made in EU



**BS04 - Linen Spa Back Strap**

A high quality back strap made of pure knitted French linen for deep cleansing and exfoliating. The strap features FSC certified wooden handles. Machine washable. Made in EU



**MT04C - Polyester Spa Mitt**

This mitt is perfect for preparing the skin for salon treatments and tanning as the firm exfoliating texture buffs away dead skin cells allowing moisture and active skin care ingredients to penetrate. Machine washable. Made in EU



**BS04C - Polyester Back Strap**

This back strap is perfect for preparing the back and shoulders for salon treatments and tanning. Machine washable. Made in EU



**MT10 - Linen Hamam Mitt**

Recreate the joy of the Hamam spa with this pure and totally natural bathing accessory. These mitts are supple, lightweight and exfoliating. Machine washable.

Made in EU



**MT09 & BEMT09 Sisal & Linen Button Mitts**

These unique mitts combine style, quality and functionality. The texture is perfect for exfoliating, and cleansing the whole body



**MT14 - Bamboo Gentle Exfoliation Mitt**

A sumptuous mitt for silky soft skin. The natural antibacterial properties of bamboo ensure clear, healthy skin. A must have natural accessory for a wonderful pampering experience. Machine washable.



**BEMT04C & MT04CG - Easy Care Spa Polyester Mitts**

These hard wearing mitts are perfect for home spa use and use in treatments due to their superb firm exfoliating texture.

The dark colours are great for use with products that may stain, are perfect for men and will add a stylish twist to any bathroom.



Machine washable. Made in EU



**SLP & SLPB - Waffle Cotton Spa Slippers**  
Keep feet comfortable and warm with these lightweight cotton slippers made from springy cotton with water resistant non slip soles. The open toes allows these slippers to be worn as the nail varnish dries. Perfect for use in the salon or at home. Small, medium and large sizes available. Machine washable.



**HDB - Waffle Cotton Spa Headband**  
A soft cotton headband to keep hair securely away from the face during cleansing and massage treatments. The Velcro fastening means it is adjustable and easy to put on the client while avoiding the facial area. Machine washable.



**BCHDB - Bamboo Elasticated Headband**  
Luxuriously silky soft Bamboo Headband, elasticated for superb grip and comfort. One size fits all. Machine washable.



**BCHDTW - Bamboo Drying Towel Wrap**  
This super absorbent bamboo wrap is the fast and easy way to dry your hair naturally. The wrap is designed to easily secure your hair in place allowing you to apply make up or have a facial while your hair dries! Perfect for the spa, gym, after swimming or when travelling as well as for using at home.



**BCEP - Bamboo & Lavender Relaxing Eye Pillow**  
This luxuriously silky soft bamboo fabric eye pillow, padded with natural lavender and rice, acts as a compress providing a gentle weight to help muscles relax while the lavender scent soothes the mind. Tested to BS8433 safety standard this pillow can be heated in the microwave to soothe tense facial muscles, encourage circulation or popped in the fridge /freezer to reduce inflammation and refresh tired eyes.

For more professional spa items, please see our comprehensive range of body brushes and massagers on page 14 - 17



Hydréa London brings you a collection of exceptionally well made, affordable body brushes made from FSC certified sustainable Beechwood. The finishing touches make these brushes the professional's choice. For example our professional treatment brushes are made in Europe and the bristles are cut in a curved shape for easier and more effective skin brushing. They have high quality, water resistant hand straps for a comfortable grip and stainless steel rivets. All our brushes are made from specially heat treated timber to prevent cracking and finished with double waxing so they are mould resistant and can easily be used in water, saunas and steam rooms - ideal for professional spa use.



The mark of responsible forestry

## What is FSC certification?

This stands for Forest Stewardship Council. FSC certified forests are managed to ensure long term timber supplies while protecting the environment and the lives of forest-dependent peoples. The Natural Sea Sponge Company holds the chain of custody number SA-COC-003038 which traces forest products through the supply chain to the end consumer. Our products carrying this certification number are eco-friendly and have been made from wood that comes from a sustainable and renewable resource.

## The different bristles we use -

We use different types of natural bristles of varying strengths in our brush range so we have a brush that is suitable for all skin types. All our bristles carry certificates of sanitation.



**Cactus bristle** - this is the firmest type of bristle available and best used dry. Here we use the finest Mexican Tampico - a type of Cactus which is preferred by therapists and experienced body brushers for dry body brushing treatments as it's the most effective. It has firm, low flex thicker fibres which improve with age.



**Boar bristle** - this is a strong, good quality bristle often used in hair brushes to stimulate the scalp and clean and condition the hair. Ethically sourced as the animals are not killed.



**Hogs hair** - this is a medium strength bristle which is good for all skin types and it can be used wet or dry. This is a good bristle to start dry body brushing with the aim of progressing to the cactus.



**Horse hair** - this is slightly softer than hog's hair and again can be used wet or dry. Perfect for gently exfoliating the face.



**Goat's hair** - this is the softest of the bristles and is excellent for use on babies sensitive skin or in facial treatments as it very gently stimulates the delicate facial lymph nodes.

## What is dry body brushing?

This is one of the simplest and easiest ways to improve your skin tone and well-being. It is an ancient practice brushing the whole body with repetitive strokes using a dry natural bristle brush to remove dead skin cells while stimulating the blood flow and the lymph nodes to deliver nutrients to the skin and banish waste and toxins from the body.

**Tips:** This is best carried out before a bath or shower so you can wash off the impurities. Starting at the feet, brush in long strokes up the legs and then concentrate on brushing your hands and up your arms. Repeat these brush strokes 7 times. When brushing your chest & upper back focus the strokes towards your heart. Brush in circular motions over the abdomen. Do not use on sensitive areas (face) or on broken skin. The whole routine should take about 10- 15 minutes.

If you are new to body brushing try light strokes first and build up to harder strokes as the skin gets more used to it. For very sensitive skins it may be preferable to start with a softer natural bristle brush and work up towards the coarser cactus. For best results follow this with a massage with a one of our Specially designed cellulite massagers – it is really so simple and effective.

## Body Benefits

### of dry body brushing

- Exfoliate away dead surface cells for silky soft skin.
- Allows active skincare ingredients to penetrate the skin for more hydrated skin.
- Prevents in-growing hairs.
- Prepares the skin for treatments, tanning and can prolong sun tans.
- Cleanses and unblocks pores, removes impurities for brighter and blemish free skin.
- Releases endorphins to reduce stress for a relaxed body and mind.
- Tones muscles and tightens the skin.
- Stimulates the lymphatic system to drain toxins away safely from the fatty layers in the skin, helping to prevent the build-up of cellulite and reduce puffiness.
- An efficient lymphatic system helps protect the immune system.
- Stimulates blood circulation to increase oxygen and nutrients to deep skin layers and encourages cell renewal for healthier, younger looking skin.
- Excellent as part of a detox programme as it helps flush away toxins.



**WSH13S - Professional Dry Skin Body Brush with Cactus Bristle**

The firm bristle is preferred by professional therapists for dry body brushing to improve lymphatic drainage, help to reduce the appearance of cellulite and smooth skin. Ergonomically designed with a detachable handle for all over easy reach.

FSC certified beechwood  
Hard strength cactus  
bristle Made in UK



**WSH13N - Professional Body Brush with Natural Bristle**

This high quality professionally designed brush is suitable for all skin types. Perfect for wet body brushing or for dry brushing more sensitive skin. Ergonomically designed with a long detachable handle for easy reach.

FSC certified beechwood  
Medium strength natural bristle for wet & dry  
brushing Made in UK



**WSH13SH - Professional Body Brush with Cactus Bristle**

With specially curved cut cactus bristles for easy all over brushing. This brush is ergonomically designed with a hand strap for extra control and easy sweeping motions making it perfect for the professional therapist.

FSC certified beechwood  
Hard strength cactus  
bristle Made in UK



**WSH13NH - Professional Body Brush with Natural Bristle**

With specially curved cut natural bristles for easy all over brushing. Suitable for all skin types. This brush is ergonomically designed with a hand strap for extra control and easy sweeping motions making it perfect for the professional therapist.

FSC certified beechwood  
Medium strength natural bristle for wet & dry  
brushing Made in UK



**WBH13 - Body Brush with Natural Bristle**

A classic brush suitable for all skin types and perfect for wet body brushing or dry brushing more sensitive skins.

FSC certified beechwood  
Medium strength natural  
bristle for wet & dry brushing



**WBH3 - Short Body Brush with Natural Bristle**

A classic brush suitable for all skin types. With a fixed handle for extra control.

FSC certified beechwood  
Medium strength natural  
bristle for wet & dry brushing





**WBS13S - Dry Skin Sauna Brush with Cactus Bristle**  
This professional spa brush has firm cactus bristles which are perfect for dry brushing the body before entering the sauna. Hard strength cactus bristle. FSC Certified Beechwood.



**WBS13N - Sauna Brush with Natural Bristles**  
This professional spa brush is suitable for all skin types. Medium strength natural bristle for wet or dry body brushing ®



**WSH3S/40 - Professional Dry Skin Detox Brush**  
With extra long 40cm cactus bristle and a wide surface area for effective dry skin brushing. Hard strength cactus bristle. Made in EU. FSC Certified Beechwood.



**WSS13 - Sauna Brush with Natural Bristle**  
This classic sauna brush is suitable for all skin types. Medium strength natural bristle for wet or dry body brushing



**WBB13H-HD - Bamboo Bath Brush with Mane & Cactus Bristle**  
A beautiful body brush with detachable handle & medium/hard strength bristle for wet or dry body brushing



**WBP133S - Plywood Body Brush**  
A beautiful, ergonomically designed body brush made with durable, waterproof plywood to prevent cracking & ensure a long-lasting usage. With natural bristle. FSC Certified Beechwood.



**WBB10H-HD - Round Bamboo Body Brush with Mane & Cactus Bristle**  
A beautifully designed brush to be used wet or dry. Medium/hard strength bristle.

## The benefits of massage

- Releases feel-good endorphins to reduce stress for a relaxed body and mind.
- Increases energy and helps sleep patterns.
- Helps reduce the build-up of lactic acid after exercise that causes cramp
- Eases muscle pain and fatigue.
- Tones skin and muscles
- Stimulates blood circulation, oxygen and nutrient to the new skin cells
- Stimulates lymph nodes to safely drain away toxins that become trapped in the skin layer helping to reduce cellulite, improve digestion and respiration. The lymph nodes are located in the neck, armpits, groin, and the backs of the knees and inside the elbows.



### WSH12H - Detox Massage Brush

Combining flexible nodules with natural bristles, there are multiple health and beauty benefits from this one brush.  
FSC Certified Beechwood.



### WBH2 - Combination Massage Brush

Combining wooden nodules with natural bristles there are multiple Health & Beauty benefits from this one brush. With a short fixed handle for extra control.  
FSC certified beechwood



### WBH12 - Combination Long Massage Brush

With a long handle for ease of use and a detachable head with hand strap for extra control when needed.



### WBH11 - Cellulite Brush

A nodule brush to tackle the 'orange peel' effect. With a long handle for ease of use and a detachable head with hand strap for extra control when needed.



### WMS1 - Stress Spot Massager

This is an effective tool that delivers a deep penetrating massage. This small easy grip hand held massager is the perfect travelling companion for those times when you need to ease muscle fatigue and unwind! This massager can be used anywhere on the body where you feel stress or strain and it is good for easing tension along the spine.





## WSH1S - Cactus Nail Brush

A high quality nail brush with extra firm cactus bristle which is excellent for really removing stubborn dirt under the nails and on the hands. The bristles remain stiff even in water and improve with age.

FSC Certified Beechwood. Made in EU



## WBH1 - Nail Brush

A traditional design of nail brush with short stiff angled bristles along the top side for deep cleaning nails & longer bristles underneath for exfoliating the hands.

FSC Certified Beechwood.



## WOH1 - Olive Wood Travel Nail Brush

A premium quality, handy sized nail brush made from beautiful, water- resistant olive wood. With a row of stiff angled bristles for deep cleaning under the nails Made in EU



## WOL1 - Olive Wood Nail Brush

A premium quality nail brush made from beautiful water resistant olive wood. With dual sided extra stiff boar bristles or deep cleaning hands and nails. Made in EU



## WRH1 - Rosewood Nail Brush

A premium quality nailbrush made from beautiful dark rosewood with a traditional design. It features a row of stiff angled bristles along the top for cleaning under the nails, with longer, slightly softer bristles underneath for exfoliating & smoothing the hands.



## WRM1 - Rosewood Nail Brush

A premium quality nail brush made from beautiful dark rosewood with stiff boar bristles.



## WBB1H-HD - Bamboo Nail Brush

A premium quality nailbrush made from bamboo with a row of mane and cactus bristles for exfoliating & smoothing the hands.



## WWS1 - Walnut wood Nail Brush

A stylish, ergonomically shaped hand and nail brush with medium strength natural bristles. This brush can also double as a mini body brush when travelling.



## WBP1S-HD - Plywood Nail Brush

A beautiful, ergonomically shaped nail brush made with highly durable, waterproof plywood & stiff natural bristles.

## Foot Care Collection



**PUSW - Natural Beechwood Foot File with Ceramic Micro Crystals**  
Our uniquely curved Beechwood Natural Professional Spa Foot File is coated 360 degrees with Ceramic Micro Crystals for effective removal of rough calluses, hard skin and cracked heels.



**PUSR - Shaped Pumice**  
This shaped pumice can be used to buff exfoliate those tough areas of dry skin - with a handy rope for easy storage and drying after use.



**PUSC - Natural Pumice Stone**  
A tough and hardwearing pumice from Hydréa London that will not lose its shape or effectiveness over time.



**PUSCBE - Volcanic Black Pumice Stone**  
A large, stylish, hardwearing pumice that effectively removes hard skin and looks great in the bathroom!

## Facial Care Collection



**WFB1H - Facial Brush**  
A facial brush with soft pony hair bristle - the perfect texture to gently exfoliate and smooth skin for a fresher, brighter appearance. Use with cleansers to deep cleanse pores and stimulate the blood flow. FSC Certified Beechwood.



**WOF1GH - Facial Brush**  
With soft to medium strength pony mane bristle for gently exfoliating and stimulating the circulation and the lymph nodes for healthier skin and a radiant glow. Made in EU



**WOF1G- Soft Facial Brush**  
With supersoft goat's hair for gently cleansing and massaging the face. Made in EU



**TUBE 21 - Cosmetic Sponge Set**  
A set containing two Honeycomb and one Fina Silk sea sponge. Super absorbent, durable and hypoallergenic. Perfect for cleansing, gentle exfoliation and applying foundation and make up. origin: Mediterranean

**TUBE 31 - Cosmetic Sponge Set**  
One Honeycomb and two Fina Silk sea sponges from the Mediterranean . Perfect for all cosmetic needs.

**TUBE 41 - Cosmetic Sponge Set**  
A set containing three Fina Silk sea sponges - silky soft sponges ideal for applying foundation and make up and deep cleansing in those hard to reach areas around the eyes and nose.



**FBS30 - Bamboo Facecloth**  
An antibacterial bamboo face cloth with one textured side for exfoliating and a smooth side for cleansing.



**LO10 - Facial Pad**  
An organic Egyptian loofah pad for cleansing and exfoliating the face.







#### Tube 12 - Baby Sponge Set

A set containing two 3 inch Honeycomb sea sponges which are perfect for caring for a baby's delicate skin. Honey sea sponges are the finest quality of natural sponge available - they are silky soft, highly absorbent and create a luxurious lather.

Origin Mediterranean - made in UK

#### Tube 51 - Baby Sponge Set

A set containing one Honeycomb and one Fina Silk sea sponge - the highest quality sponges available. Both sponges are hypoallergenic, super absorbent and durable. They are small enough to clean the creases in baby's skin. Honeycomb is great for massage and gentle exfoliation while Fina Silk, which has smaller pores, is the softest sponge there is and perfect for soothing baby at bath time!

Origin Mediterranean - made in UK

#### TUBE 42 - Baby Sponge Set

A set containing two Fina Silk sea sponges - these sponges are wonderful at caring for baby's delicate skin and would make an ideal present for a newborn baby.

origin Mediterranean - made in UK



#### WBH4G - Baby Brush

A high quality natural brush for all baby's grooming needs. It is easy to hold and made with ultra-soft goat's hair bristle which is perfect for gently brushing and caring for your baby's hair or for a soothing skin massage. The Beechwood is unvarnished so it is perfectly safe if baby chews it!

FSC Certified Beechwood

Made in EU



#### FBS30 - Bamboo dual sided Washcloth

A sumptuous washcloth with a textured bamboo side for a gentle massage and a smooth soft side for washing. The antibacterial and hypoallergenic nature of bamboo cares for your baby's skin.

Machine washable.

## The Properties of Olive Wood

Olive trees grow and thrive for many hundreds of years so for this reason it is quite rare to find brushes made of olive wood. As the fruit of the trees is more valued than the wood itself, we only use wood from Mediterranean olive trees that have reached the end of their fruitful life. Olive wood has a rich distinctive grain and a unique personality so you will never find two brushes alike.

In terms of quality, olive wood is far superior as the density and natural oils make it difficult for water to penetrate it and it is this imperviousness that makes it ideal for making bath brushes. With these qualities and their ergonomic design, these brushes are as beautiful to look at as they are to use! It is not an easy wood to work with as it is knotty and hard, but the extra work is rewarded by the beauty of the finished product which becomes even better with age and use.

All the brushes in this range are premium quality and hard wearing.



### WOH13 – Bath Brush

The hard strength natural bristles exfoliate to leave skin smooth and soft. This brush is water resistant and ergonomically designed with a detachable handle for easy reach and a secure strap on the brush head for firm control. Made in EU.

### WOH1 - Travel Nail Brush

A handy travel size nailbrush with a row of stiff angled bristles for deep cleaning under the nails and longer boar bristles on the other side for removing hard dry skin on the hands and improving circulation. Made in EU.

### WOL1 – Nail Brush

A large dual-sided nailbrush with extra stiff boar bristles for deep cleaning nails, softening the cuticles and stimulating the nail beds for healthy nail growth and softer, more youthful looking hands. Made in EU.



### WOF1GH – Facial Brush

With soft to medium strength pony mane bristle for gently exfoliating and stimulating the circulation and the lymph nodes for healthier skin and a radiant glow. Made in EU.



### WOF1G – Soft Facial Brush

With super soft goat's hair for gently cleansing and massaging the face. Made in EU.



## What is Boar Bristle?

We ethically source our boar bristle from wild boar in Europe – they are not from slaughtered animals. Boar bristle has a natural stiffness and yet they 'give' as they are drawn through the hair. They are set in tufts of different length individual bristles that allow the bristles to penetrate through the hair more easily for longer more fluid brush strokes. Boar bristle is most effective at smoothing the hair and distributing the natural oils along the hair shaft for shiny looking conditional hair. They make great styling brushes.

## Olive Wood



These hair brushes are crafted in Europe from beautiful olive wood which has a rich distinctive grain and unique personality. The wood is superior in quality being strong and water resistant due to the natural oils of the wood. We only use wood from Mediterranean olive trees that have reached the end of their fruitful life. All the brushes in this range are premium quality and hardwearing.



**WORBC13 – Styling Brush**  
Combining flexible boar bristle with longer length nylon pins for gently detangling hair and stimulating the scalp. With a pneumatic rubber cushion for pain-free brushing. Made in EU.



**WORBC1 – Hair Brush**  
With boar bristle and a pneumatic rubber cushion to prevent hair pull for pain-free brushing. Made in EU.



**WORWC2 – Anti-Static Hair Brush**  
Rounded wooden pins set in a pneumatic rubber cushion penetrate deeper than a regular brush for a stimulating scalp massage. Perfect for gently detangling hair while preventing static build up. Made in EU.



**WORBC14 – Anti-Static Hair Brush**  
Handy handbag size.



**WOS1 – Rectangular Hair Brush**  
With boar bristle and no cushion. Made in EU.



**WOR1 – Oval Hair Brush**  
With boar bristle and no cushion. Made in EU.

We sustainably source our walnut wood from well-managed North American plantations. Walnut wood is a strong, beautifully rich coloured wood and each piece is a unique ergonomic design for easy bodycare use. The products in this range can be used for dry and wet body brushing, cellulite massage and nail care as well as looking great in the bathroom.

#### WWS13 – Walnut Wood Body Brush

With medium strength natural bristle for all skin types.



#### WWS1 - Walnut Wood Nail Brush

An ergonomic nail brush with natural bristle for cleaning and exfoliating the hands and nails.



#### WWH13SH - Walnut Wood Dry Skin Brush

The firm cactus bristles are perfect for dry brushing and lymphatic drainage treatments.



#### WWH13NH - Walnut Wood Body Brush

With softer natural bristles for all over exfoliation. Perfect for all skin types and for dry brushing more sensitive skin.



#### WWS10 - Walnut Wood Cellulite Massager

With walnut wood pegs and a high quality cushion, this massager can be used with essential oils making it the perfect salon tool for the professional therapist. The unique shape and hand strap make this massager the most comfortable to use.





A stylish collection that is elegant and smart, consisting of premium quality products designed for easy and lasting use. Especially popular with men these products also bring a chic twist to any bathroom.



**BESBS - Back Strap**

Made from 100% natural sisal fibre, this high quality strap is perfect for buffing away dead skin cells while boosting circulation. Perfect for use after exercise. Made in EU



**BESCBS - Dual Sided Back Strap**

A stylish dual sided strap with one side woven from 100% natural sisal fibre for invigorating exfoliation with a reverse side of soft terry cotton for a deep cleansing massage. With FSC Certified Wooden Handles. Made in EU



**BEBS - Large Bath Buffer**

This stylish two tone buffer is large at 50g and super soft. The dense layers of mesh create a rich lather and ideal texture for gently polishing the skin.



**BESMT - Dual-Sided Mitt**

Enjoy multiple benefits from this classic high quality mitt. One side is woven from 100% natural sisal fibre for exfoliation while the reverse is soft terry cotton for a deep cleansing massage. Made in EU.



**BEMT04C - Exfoliating Mitt**

A superb hard texture for exfoliating and cleansing the whole body, while energising tired muscles. Made in EU.



**BEMT09 - Button Mitt**

A unique mitt with a hard sisal exfoliating texture and a linen cuff.



**BESLP - Cotton Slippers**

Thick and comfortable black cotton slippers with a springy rubber gripped sole, with closed toes for extra warmth.

These products in the Hydréa collection of grooming tools for men are created in the old tradition of luxury and quality. They are of exceptional quality, having been made in Europe, expertly crafted from FSC certified wood and carefully hand-finished to create a durable, yet stylish brush for the discerning gentleman.



WGS13HB - Military Hairbrush

With strong black boar bristle to stimulate the scalp and ensure hair is always perfectly conditioned and groomed.

FSC Certified Beechwood.

Made in EU



WGS6T - Travel Clothes Brush

With pure boar bristle to brush clothes or shoes down, a lint and fluff remover and a handle complete with easy to use shoehorn. The neat fold up design makes it the perfect travel item.

FSC Certified Beechwood.

Made in EU



WGS6L - Travel Clothes Brush

With pure boar bristle to brush clothes or shoes down, a lint and fluff remover and a handle complete with easy to use shoehorn.

FSC Certified Beechwood.

Made in EU



WBH1 - Rosewood Nail Brush

A premium quality nail brush made from beautiful dark rosewood with a traditional design. It features a row of stiff angled bristles along the top for cleaning under the nails with longer, slightly softer bristles underneath for exfoliating and smoothing the hands.



WRM1 - Rosewood Nail Brush

A premium quality nail brush made from beautiful dark rosewood with stiff boar bristles.



## BB120G – Bath Bombs

Effervescent Bath Bombs infused with the following fragrances:

- Nourishing Chamomile & Honey
- Calming Lavender Dream
- Fresh Sicilian Lemon & Thyme
- Indulgent Wild Rose Infusion

Not tested on animals.  
Made in the UK.



BB120CH – Nourishing  
Chamomile & Honey



BB120L – Calming  
Lavender Dream



BB120SLT – Fresh  
Sicilian Lemon & Thyme



BB120R – Indulgent Wild  
Rose Infusion



## NDC60 - Natural Crystal Deodorant

It safely neutralizes the odour-causing bacteria without blocking the pores or using harmful chemicals. Hypoallergenic, fragrance free and non-staining, it's a perfect travel accessory and great to take on the plane.



BEBS, BBS & BCBS-HD - Large Bath Buffers

These stylish two tone buffers are large at 50g and super soft, making them an ideal bath and shower accessory that will also look great in the bathroom! The dense layers of mesh create a rich lather and ideal texture for gently polishing the skin.



SC01Z and SC01L – Eco-friendly Shower Caps

These stylish shower caps not only look gorgeous but they are comfortable and functional too. Each high quality cap is lined with soft, eco-friendly waterproof PEVA material, keeping your hair perfectly secure and dry in the bath or shower.

Large comfortable size.

#### Benefits of PEVA

Unlike PVC, it does not contain toxic phthalates or mercury, or chlorine which emits harmful carcinogenic dioxins. PEVA is also biodegradable and recyclable as well as strong, waterproof and flexible. Therefore PEVA is much better for the environment and human health.



BB55SP – HD – Bath Buffer Strip

A hanging clip strip of 9 large, soft brightly coloured bath buffers. Each buffer has a suction cup for easy storage in the bathroom.



BCEG1 - Carbonized Bamboo Shower Gloves

These unique bamboo anti-bacterial gloves are made with a new natural technology for better health & beauty benefits that last no matter how many times you wash them. By releasing Anions and far infrared, they help energise and discharge the body from harmful electromagnetic waves.



FBS30 - Bamboo Dual-Sided Flannel

A thick and sumptuous washcloth that is naturally antibacterial. The textured bamboo side provides an exfoliating massage for the face and body while the smooth reverse is perfect for gentle washing and removing cleansing products from the facial area.



## Natural Bodycare Spa Gift Set – LGB11

Our Bodycare Spa Gift Set turns your daily cleansing routine into a luxurious treat leaving you feeling thoroughly pampered from top to toe.



## Duo Sets

We have combined some of our bestselling products to form the Hydréa Duo Gift Set Range. A great value collection of body care 'kits' that make fantastic gifts for an introduction to a whole new body care regime.



BS02



BCEG2

### DUO1 - Exfoliating Stretch Cloth & Gloves Set

A great value set with firm nylon loops over a natural cotton base layer, combining to create a fantastic exfoliating texture.

The stretch back strap, trebles in size when wet & the gloves expand to fit any hand shape. Use them in the shower with your favourite cleansing products.

### DUO2 - Bamboo Hair Drying Towel Wrap & Headband Set

Dry your hair quickly & easily with this super absorbent bamboo hair wrap & keep it free from your face when putting on make-up or getting a facial, using the bamboo headband. Both items are perfect for home, spa & travelling use. Machine Washable.



BCHDTW

BCHDB



DUO4



DUO3

### DUO3 & DUO4 - Sisal & Linen Button Mitt and Natural Pumice Foot File Set

Exfoliate the whole body with ease with this fantastic set, combining a stylish Sisal & Linen Mitt for cleansing the body & a Natural Pumice Foot File for removing rough skin from the feet.

Available in both standard and 'Black Elegance' versions.



MT09



BEMT09



PUSW



## The Benefits of Copper

- Copper is 100% natural & an essential trace mineral
- It provides excellent relief reducing inflammation on the skin.
- Helps reduce the build-up of lactic acid after exercise that causes cramp.
- A natural antioxidant, copper seeks out the damaging free radicals which could contribute to the aging process.
- Copper is naturally anti-microbial and inhibits the growth of bacteria.



### MT16C - Exfoliating Cotton Mitt with Copper

Harness the rejuvenating properties of copper with this unique exfoliating mitt.

Use wet or dry with your favourite cleansing product  
Perfect for delicate or sensitive skin. Machine Washable.

100's of cotton loops are woven into each mitt to give them their unique exfoliating properties. These benefits will continue, no matter how many times you use or wash your mitt. All our copper comes from responsible sources.



### MT16L – Exfoliating Linen Mitt with Copper

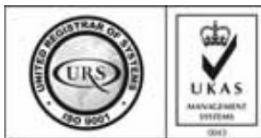
Create a more luxurious exfoliation experience with this linen mitt. Use with your favourite cleansing product. Machine Washable.



We are proud to be at the forefront of ethical sourcing and manufacture. In fact, this focus on producing top quality, functional products whilst continuing to be environmentally conscious is the driving force behind our company.

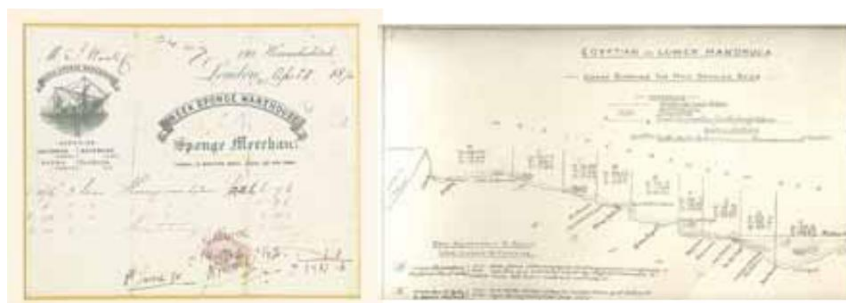
We strive to be at the forefront of ethical sourcing and manufacture, and over the years we have driven the demand for environmentally friendly products, and helped increase consumers choice and awareness. We source the finest, raw materials from around the world and make the majority of our products in the UK and Europe, specialising in FSC Certified wooden products, Organic Loofah and much more.

Our products are organic, biodegradable and our packaging 100% recyclable.



The mark of responsible forestry

Forest Stewardship Council certified forests are managed to ensure long-term timber supplies whilst protecting the environment & the lives of forest-dependent peoples. The Natural Sea Sponge Company holds the chain of custody number SA-COC-003038 which traces forest products through the supply chain to the end consumer.





# The Natural Sea Sponge Company



Please come and visit us at our showroom where we will be more than happy to discuss your requirements and show you our comprehensive range of bodycare and spa products.

To make an appointment to visit:

Please call +44 (0)20 8951 9551 or email [sales@naturalsponge.com](mailto:sales@naturalsponge.com)

Our Showroom and Office address:

Unit 11, Slough Interchange Ind Estate

Whittenham Close

Slough Berkshire

SL2 5EP

[www.hydrealondon.com](http://www.hydrealondon.com)

